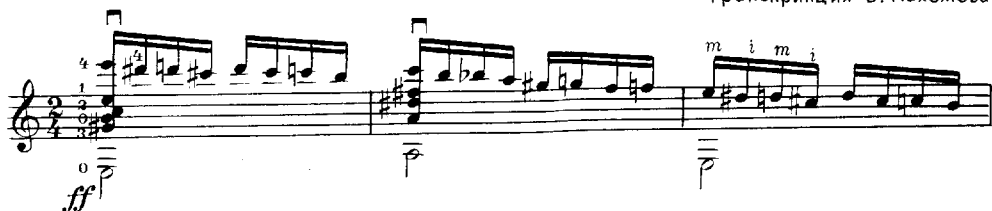


ПОЛЕТ ШМЕЛЯ

из оперы „СКАЗКА О ЦАРЕ САЛТАНЕ”

Presto

Н. РИМСКИЙ-КОРСАКОВ
Транскрипция В. Пахомова



First staff of music. Key signature: one sharp (F#). Time signature: 4/4. The staff contains several measures of music with various fingerings indicated by numbers 1, 2, 3, 4. A dynamic marking *mf* is present. A specific instruction *pulgar* (thumb) is written below the staff with an arrow pointing to a measure. Roman numerals I, IV, and III are placed above the staff.

Second staff of music. Continuation of the musical piece. It includes fingerings and the *pulgar* instruction. The staff concludes with a *p i* (piano) marking.

Third staff of music. Features a series of measures with many beamed eighth notes, each marked with a 'V' above it. The staff ends with a *p i* marking.

Fourth staff of music. Includes a crescendo from *ff* (fortissimo) to *mf* (mezzo-forte). The staff ends with a *p i* marking.

Fifth staff of music. Continues the pattern of beamed eighth notes marked with 'V's.

Sixth staff of music. Includes a crescendo from *ff* to *mf*.

Seventh staff of music. Labeled with Roman numeral VIII at the beginning. It features a series of measures with beamed eighth notes. The staff begins with a *mf* marking.

[illegible]

VIII

Musical score for a piano piece, featuring seven systems of staves. The score includes various musical notations such as treble and bass clefs, key signatures (one sharp), time signatures (3/4 and 4/4), and complex rhythmic patterns including triplets and sixteenth notes. Dynamic markings include *dim.*, *p*, *morendo poco*, *mf*, *f*, *mf*, *dim. poco*, and *pp*. Articulation and phrasing are indicated by slurs and accents. Fingerings are noted with numbers 1-4. Breath marks (v) and bow marks (b) are present. The score is divided into sections labeled VIII and VII. The final system ends with a *pp* marking and a fermata.