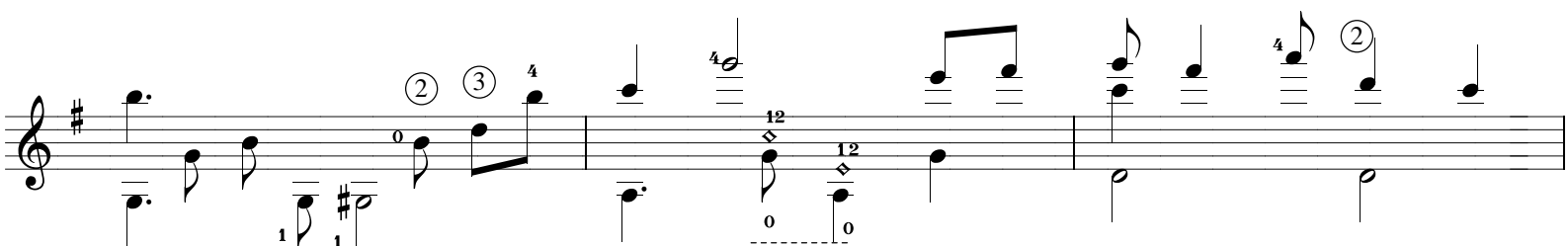
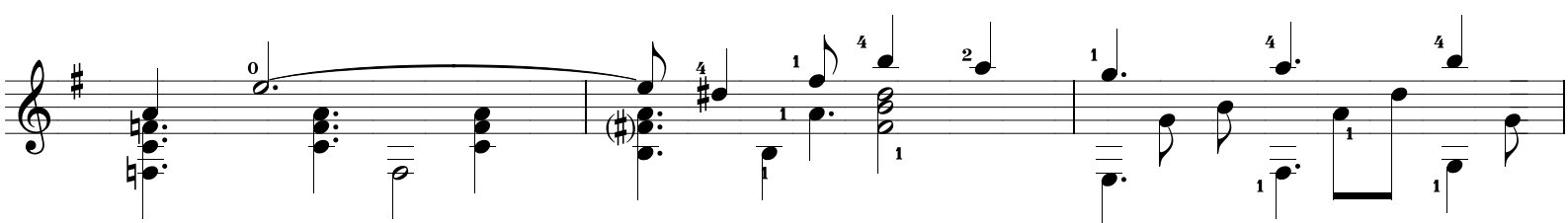
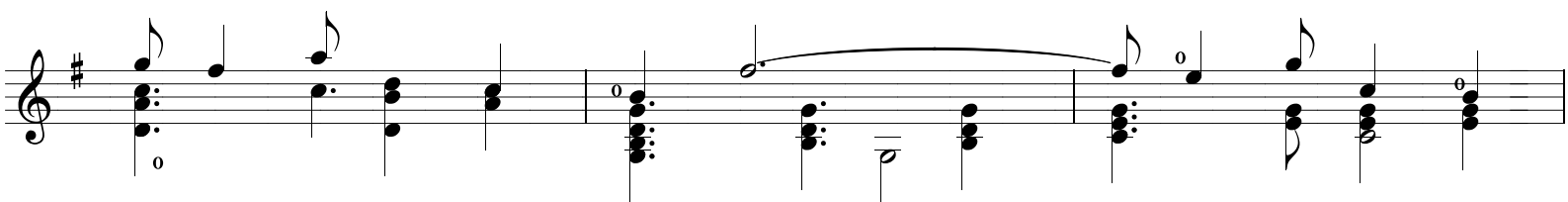
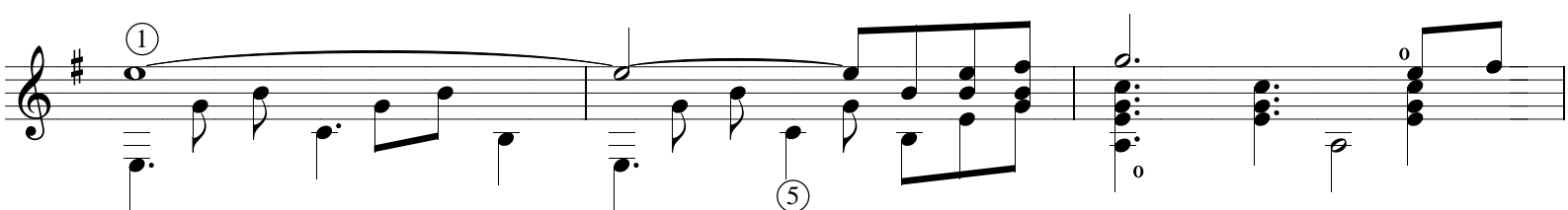
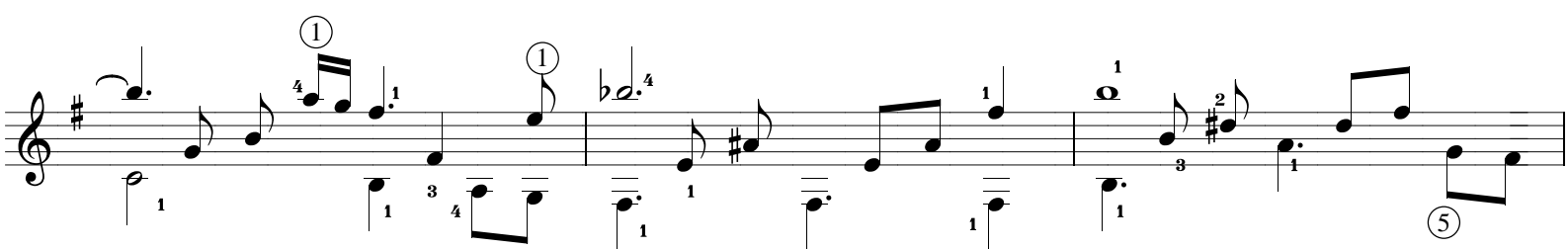
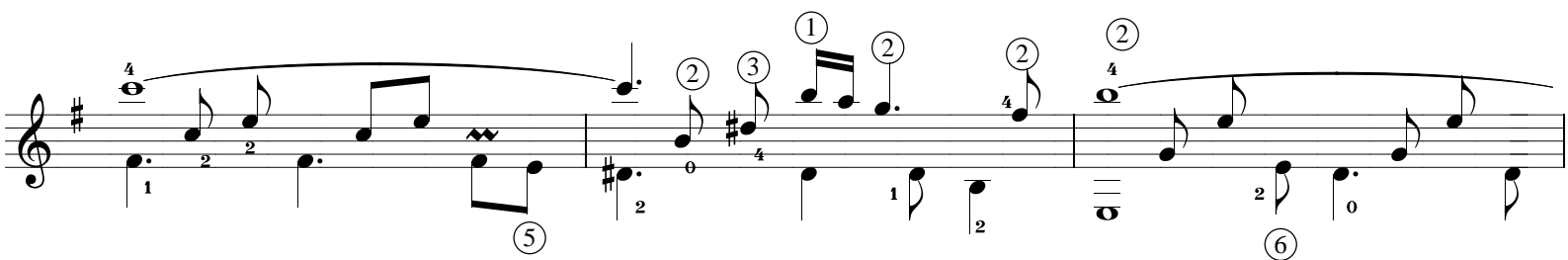
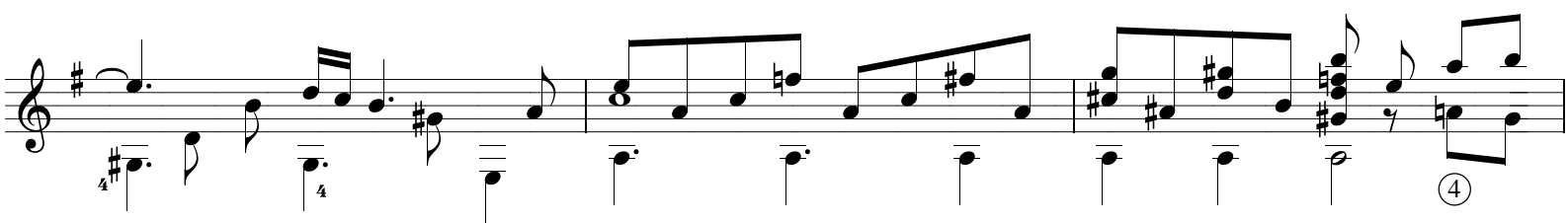


# OBVILION

A. PIAZZOLLA

Arr. by Sebastian Pompilio

This page contains six staves of musical notation for guitar. The key signature is G major (one sharp) and the time signature is 4/4. The notation includes various guitar-specific symbols such as natural harmonics (indicated by a diamond), fret numbers (circled), and fingering numbers (1-4). The music is a single melodic line with a bass line accompaniment. The piece concludes with a double bar line and repeat dots.



Harm

First staff of music. Key signature: one sharp (F#). The staff contains two measures. The first measure has a half note on the first line (F#) and a half note on the second line (C#). The second measure has a half note on the first line (F#) and a half note on the second line (C#). There are fingerings 1, 2, 1, 2, 0, 0, 4, 2, 2, 1, 3, 1. A "Harm" label is below the first measure.

Second staff of music. Key signature: one sharp (F#). The staff contains two measures. The first measure has a half note on the first line (F#) and a half note on the second line (C#). The second measure has a half note on the first line (F#) and a half note on the second line (C#). There are fingerings 1, 1, 1, 1, 0, 1, 1, 0, 4, 4, 4, 0.

Third staff of music. Key signature: one sharp (F#). The staff contains two measures. The first measure has a half note on the first line (F#) and a half note on the second line (C#). The second measure has a half note on the first line (F#) and a half note on the second line (C#). There are fingerings 0, 3, 0, 3, 12, 0. A "rit" label is below the first measure.

Fourth staff of music. Key signature: one sharp (F#). The staff contains two measures. The first measure has a half note on the first line (F#) and a half note on the second line (C#). The second measure has a half note on the first line (F#) and a half note on the second line (C#). There are fingerings 2, 2, 3, 4, 1, 1, 3, 4, 2, 2.

Fifth staff of music. Key signature: one sharp (F#). The staff contains two measures. The first measure has a half note on the first line (F#) and a half note on the second line (C#). The second measure has a half note on the first line (F#) and a half note on the second line (C#). There are fingerings 4, 2, 3, 3, 3, 2, 2.

Sixth staff of music. Key signature: one sharp (F#). The staff contains two measures. The first measure has a half note on the first line (F#) and a half note on the second line (C#). The second measure has a half note on the first line (F#) and a half note on the second line (C#). There are fingerings 2, 2, 2, 2, 2, 2.

Seventh staff of music. Key signature: one sharp (F#). The staff contains two measures. The first measure has a half note on the first line (F#) and a half note on the second line (C#). The second measure has a half note on the first line (F#) and a half note on the second line (C#). There are fingerings 1, 3, 1, 3, 2, 2, 2, 2.

First staff of music, treble clef, key signature of one sharp (F#). The staff contains a series of notes and rests, including a half note, a quarter note, and a half note with a sharp sign. The notes are mostly on the lower lines of the staff.

Second staff of music, treble clef, key signature of one sharp (F#). The staff contains a series of notes and rests, including a half note, a quarter note, and a half note with a sharp sign. The notes are mostly on the lower lines of the staff.

Third staff of music, treble clef, key signature of one sharp (F#). The staff contains a series of notes and rests, including a half note, a quarter note, and a half note with a sharp sign. The notes are mostly on the lower lines of the staff.

Fourth staff of music, treble clef, key signature of one sharp (F#). The staff contains a series of notes and rests, including a half note, a quarter note, and a half note with a sharp sign. The notes are mostly on the lower lines of the staff.

Fifth staff of music, treble clef, key signature of one sharp (F#). The staff contains a series of notes and rests, including a half note, a quarter note, and a half note with a sharp sign. The notes are mostly on the lower lines of the staff.

Sixth staff of music, treble clef, key signature of one sharp (F#). The staff contains a series of notes and rests, including a half note, a quarter note, and a half note with a sharp sign. The notes are mostly on the lower lines of the staff.

Seventh staff of music, treble clef, key signature of one sharp (F#). The staff contains a series of notes and rests, including a half note, a quarter note, and a half note with a sharp sign. The notes are mostly on the lower lines of the staff.

*decresc*

*rit*

Harm