

Fuga aus Sonata I für Violine solo BWV 1001

Für Gitarre bearbeitet
von Thomas Königs (2000)

Joh. Seb. Bach
1685 - 1750

Fuga, Allegro

[illegible]

16

19

22

25

28

30

32

VII VIII

V VI VII VIII

VII VIII VII CV CV CII

1/2 CIV

CV CIV CII CII

CVIII..... VIII CVII

35

CII

37

40

42

CVII

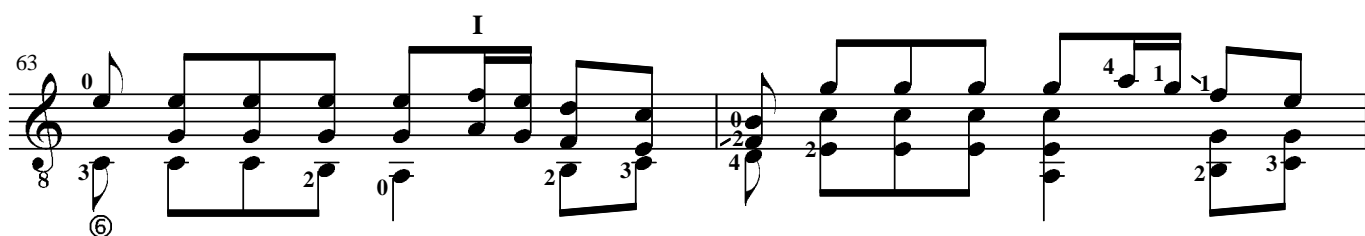
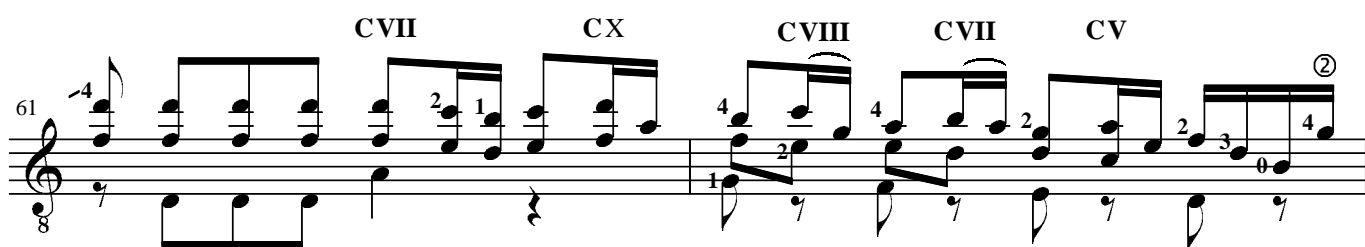
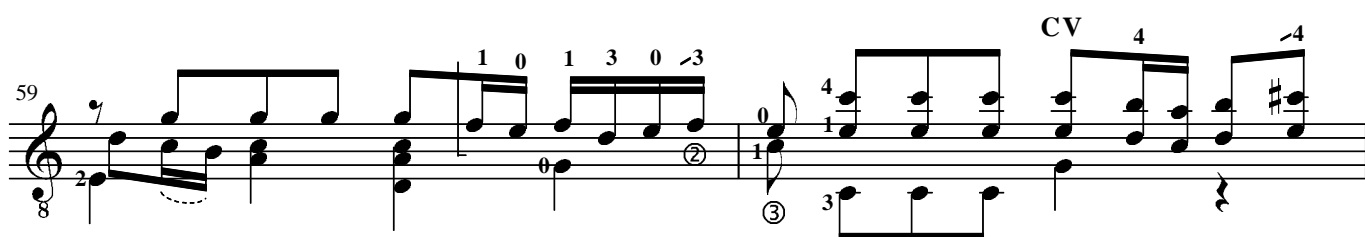
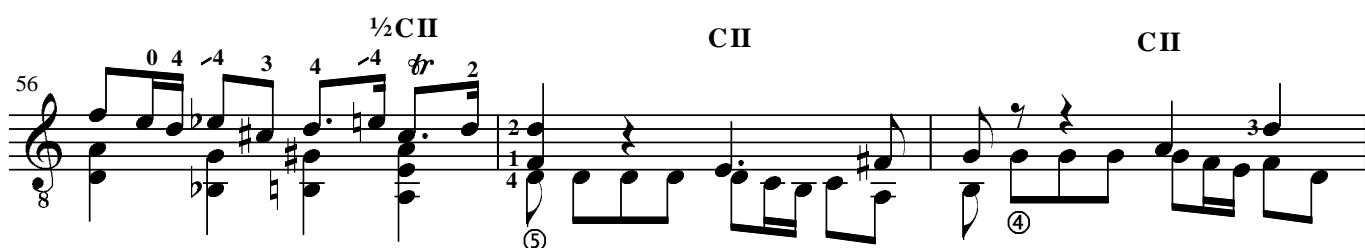
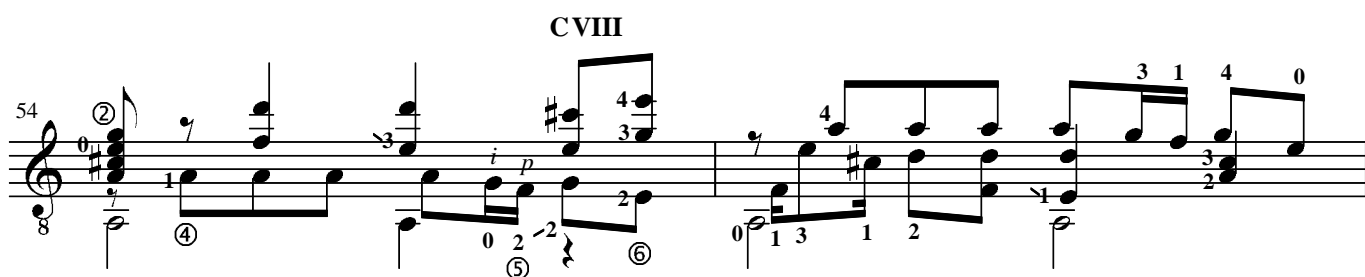
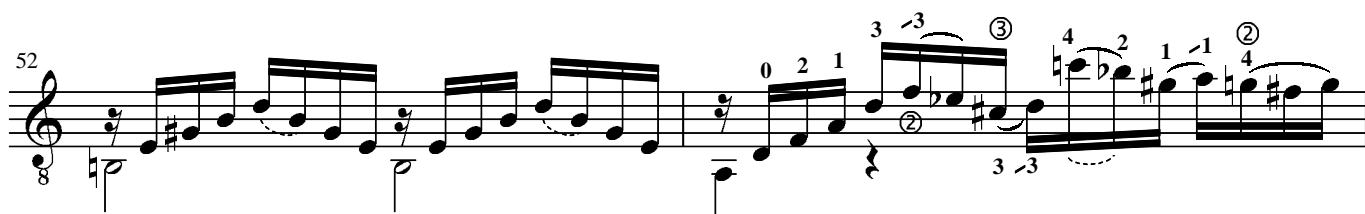
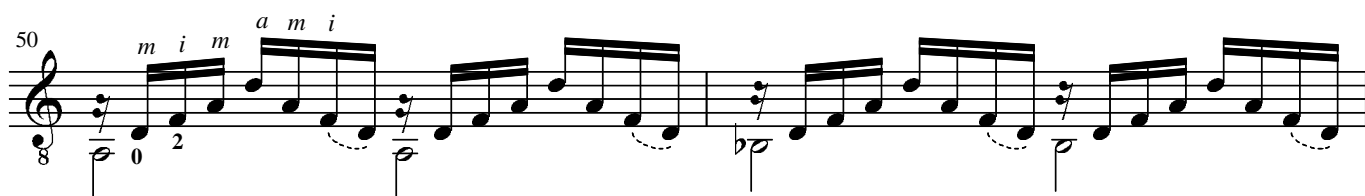
44

V CV V CV CIII

46

48

i m a m a m i



69

8

4

-4

4

2 1

1 2 3

1 2 0 1

3 4 1

1

2 3 0 1

2

3

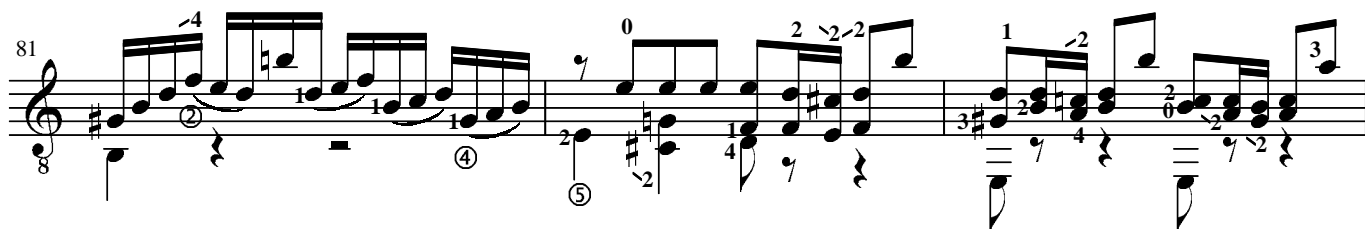
4

71 $\frac{1}{2}$ CV

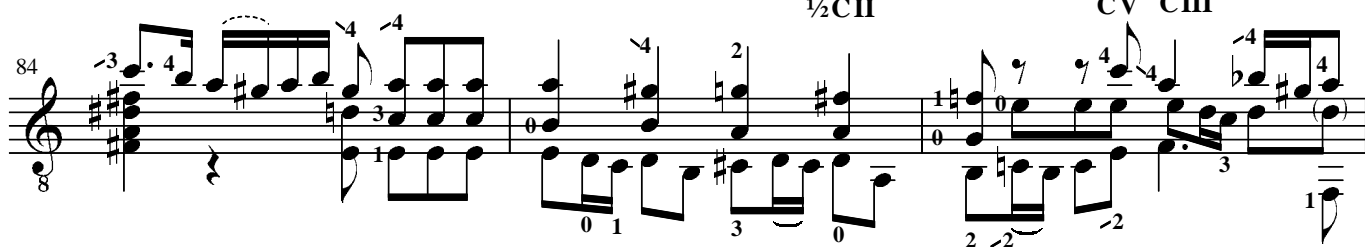
2 4 3

③ 1 3

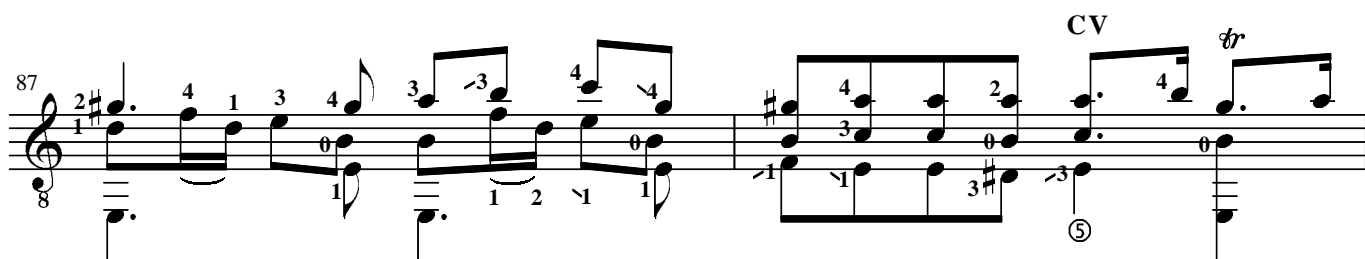
[illegible][illegible]



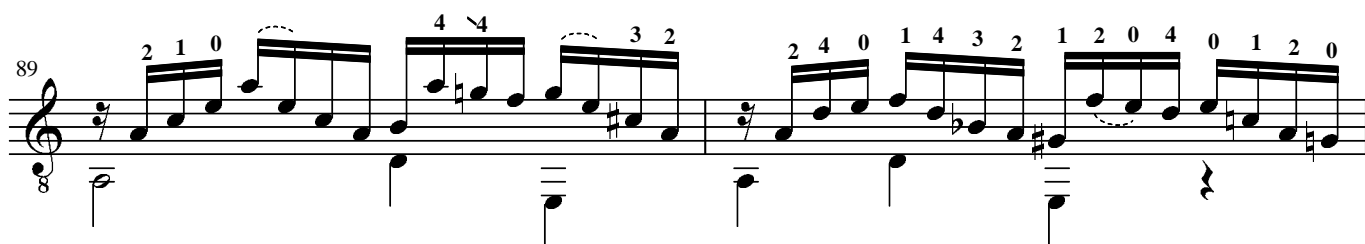
CVII

 $\frac{1}{2}$ CH

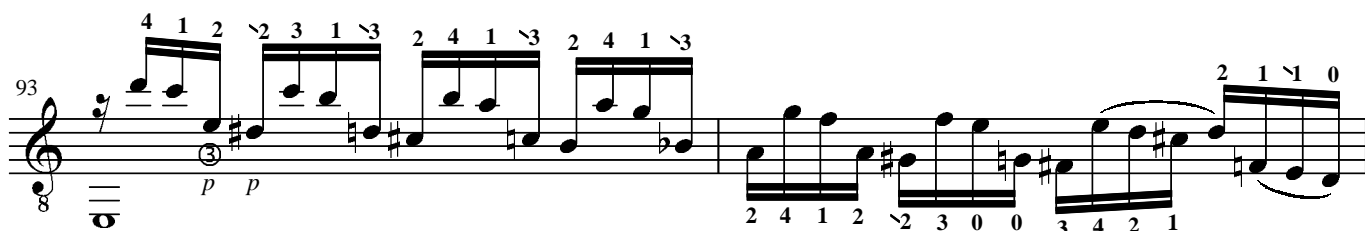
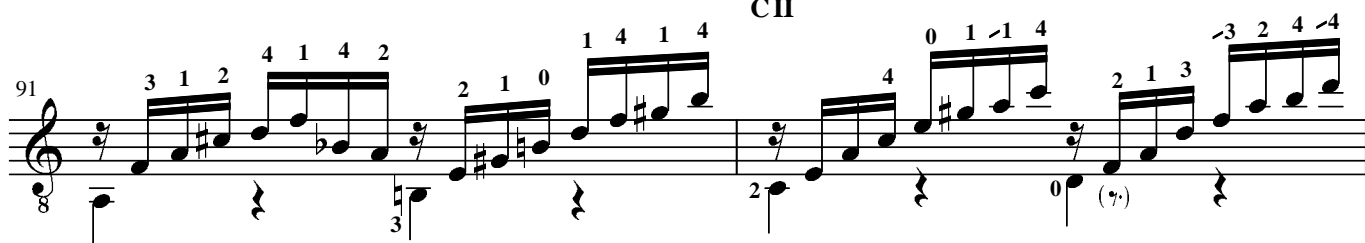
CV CHH



CV



CH



CI CV

